



# 2013 Flood & Northern Water's Response

## *SWCD Annual Seminar*

Eric Wilkinson, P.E.  
General Manager

## Facts and numbers

14 counties impacted – 7 declared disaster areas

26,000 homes damaged, 2,000 destroyed

250 debris slides, 382 miles of roads damaged or destroyed

Estimated \$2 billion in damages

## Precipitation/rainfall amounts

88 weather stations exceeded 24-hour precipitation records

Many received over 600% of average precipitation for the month

All stations exceeded September monthly highs in just six days

- Bldr NW = 14.69 " yearly total = 23.5 "
- Bldr SW = 15.33 " yearly total = 24.5 "

Loveland golf course = 6.71 " yearly = 14.9

Fort Collins = 6"

Estes Park = 9.3" highest ever 3-day total

Ave precipitation in Sept = 1.27 "

Ave yearly precipitation is 14.5 "















# Highland Ditch Company – River Diversion Structure





# Northern Water's emergency response

- The Colorado-Big Thompson Project was shut-down, but the project was still carrying water
- Southern Water Supply Project pipeline deliveries continued as there wasn't significant damage to the pipeline
- When safe, Northern Water performed a conditional assessment on all C-BT Project infrastructure
- Surveyed pipeline throughout system looking for exposed pipe





Northern Water  
infrastructure  
had \$1.6 million  
in damages





# State & federal grants

Northern Water applied for reimbursement of \$1.6 million in damages through FEMA and state grants

Approximately \$800,000 reimbursed

- 75% from FEMA grants
- 12.5% from state grants

Remaining \$800,000 in damages was not recovered through grants because proper documentation wasn't available to submit to grant programs



# Lessons learned ...

## HAVE A PLAN – Executed policies and procedures

- Have disaster policies and protocol in place BEFORE the disaster
- Purchasing policies and agreements in place BEFORE the disaster – update annually
- Align internal policies with Federal policies – the most restrictive and/or conservative policy is what you will have to follow



# Lessons learned ...

- DOCUMENT, DOCUMENT, DOCUMENT!!!
- The occurrence of a disaster demands full and complete documentation of EVERYTHING. Make documentation part of “business as usual”
  - This will facilitate the process and ease the pain when requesting reimbursement via a Federal or State Grant program(s)
- Keep updated pictures of assets – infrastructure – facilities – for damage comparison purposes

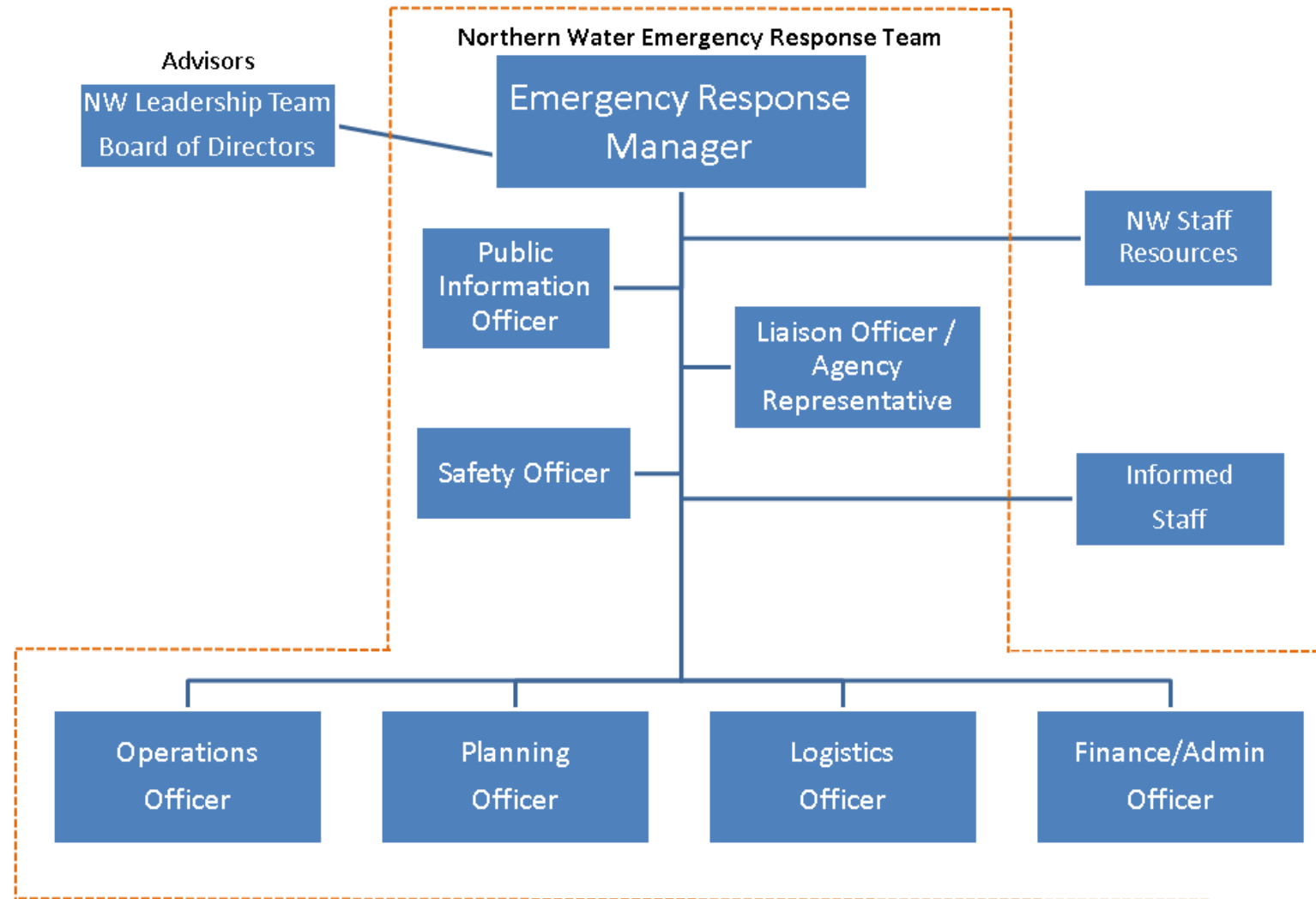
## Preparing for the next event

Agencies should have an internal  
Emergency Response Team modeled after  
FEMA's Incident Command System ~ ICS

- Educate internally BEFORE a disaster – do not rely on FEMA representatives to guide you correctly through the process.
- You are the expert of your Agency – and your own best advocate.



# Response team organization chart







DOCUMENT, DOCUMENT, DOCUMENT



## CWCB grant program

- Northern Water served as financial agent for \$2.5 million CWCB grant program
- Conducted 3 application cycles
- Reimbursed a total of 119 subgrants during the program

### CWCB Flood Recovery Grant Program



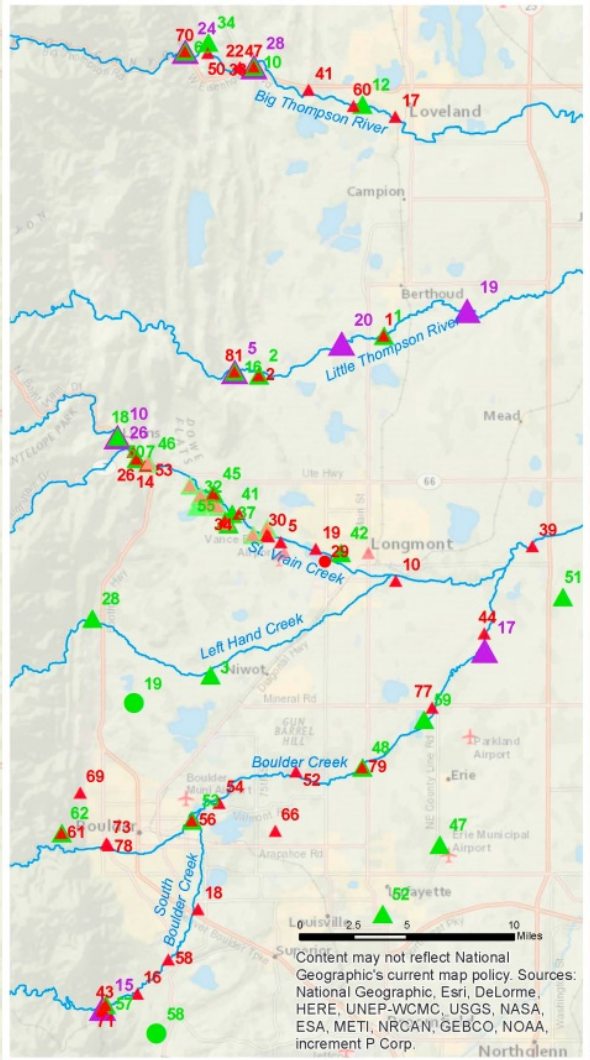
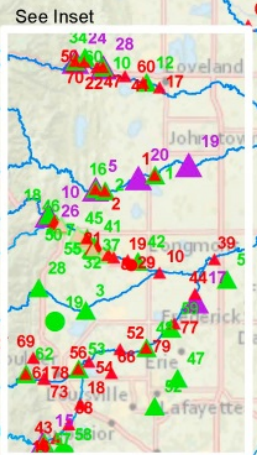
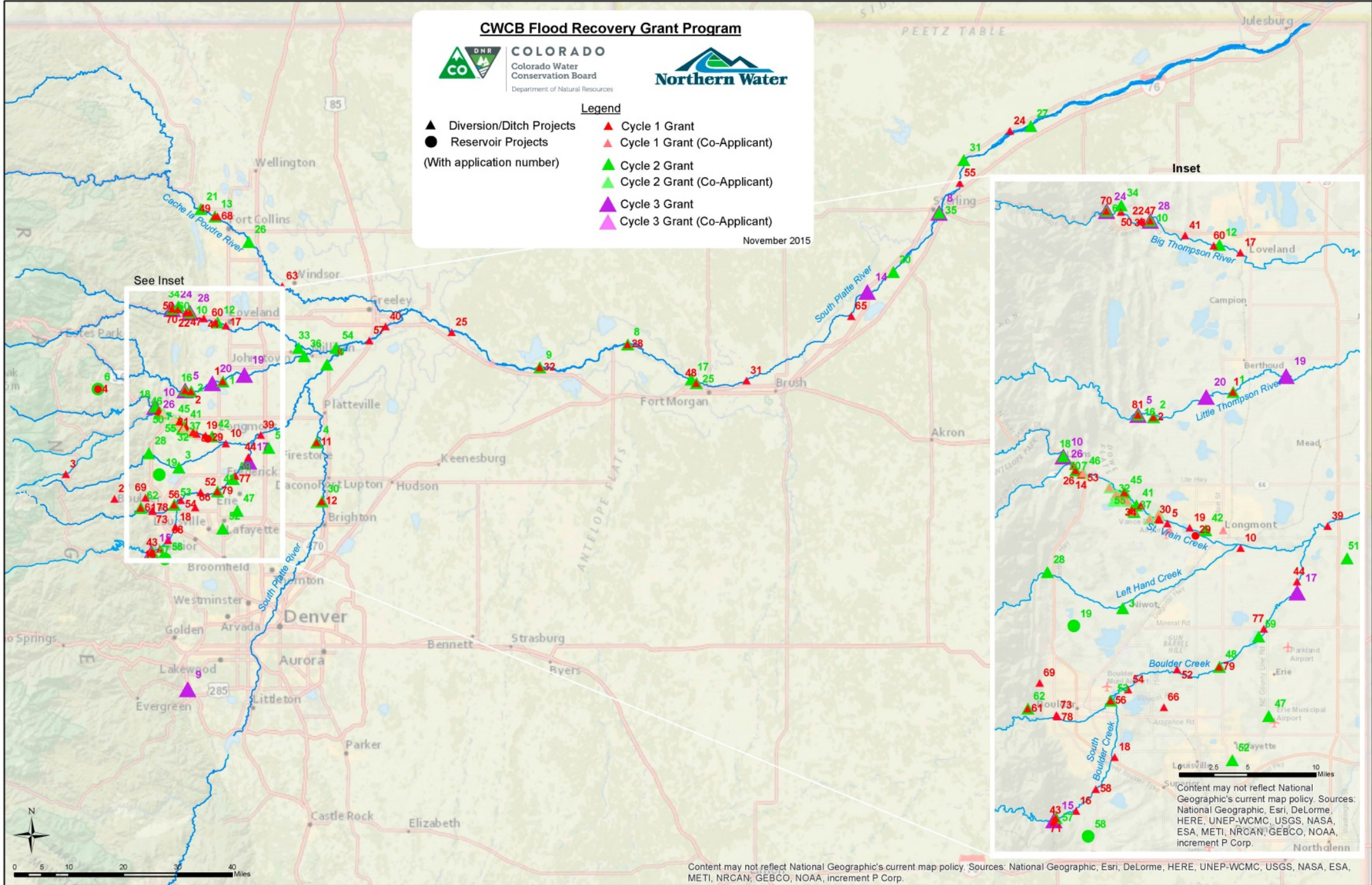
**COLORADO**  
Colorado Water Conservation Board  
Department of Natural Resources



#### Legend

- ▲ Diversion/Ditch Projects
- Reservoir Projects
- (With application number)
- ▲ Cycle 1 Grant
- ▲ Cycle 1 Grant (Co-Applicant)
- ▲ Cycle 2 Grant
- ▲ Cycle 2 Grant (Co-Applicant)
- ▲ Cycle 3 Grant
- ▲ Cycle 3 Grant (Co-Applicant)

November 2015



0 5 10 20 30 40 Miles

0 5 10 Miles

Content may not reflect National Geographic's current map policy. Sources: National Geographic, Esri, DeLorme, HERE, UNEP-WCMC, USGS, NASA, ESA, METI, NRCAN, GEBCO, NOAA, increment P Corp.



*“We are continually faced with a series of great opportunities brilliantly disguised as insolvable problems.”*

---

*John W. Gardner*

**Questions?**

