



EMWD's Recycled Water Program

Southwestern Water Conservation District's 39th Southwestern Water Seminar

Jolene Walsh

March 31, 2023

EMWD Overview

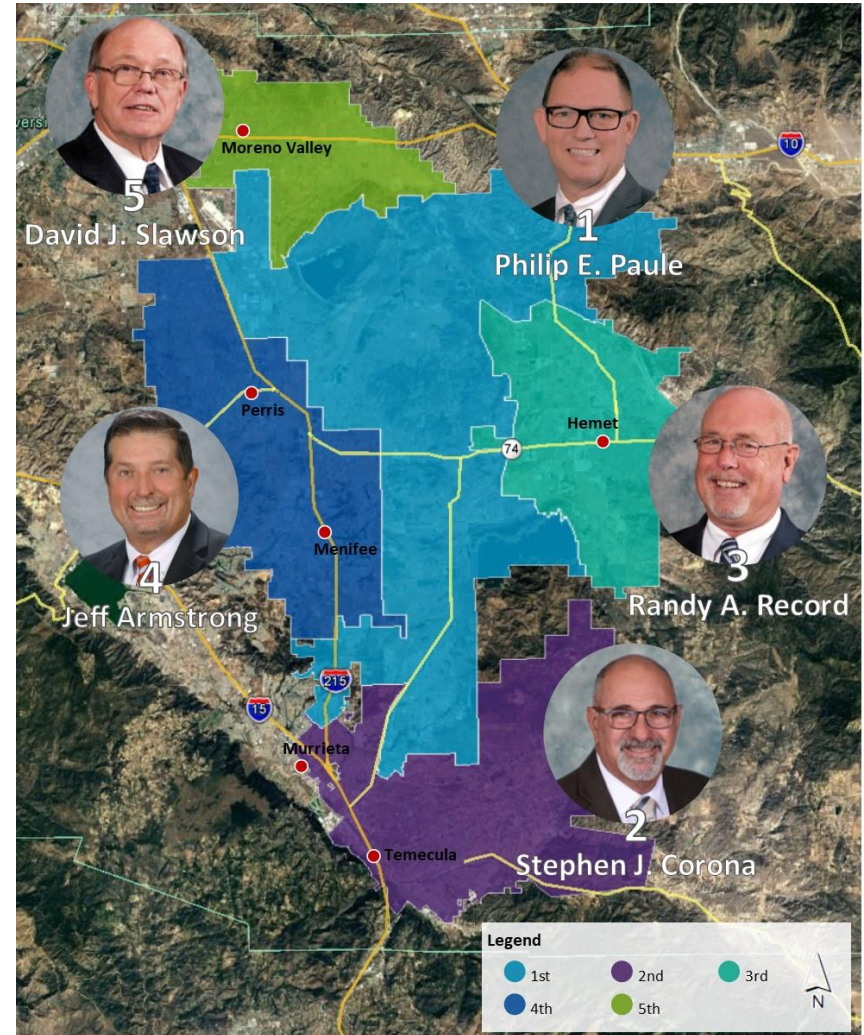
- Population ~ 1,000,000
- Service area 558 sq miles
- 38% built out
- Sixth largest public water utility in CA
- One of MWD's 26 member agencies
- Drinking water ~ 160,000 accounts
 - Water from the Colorado River and State Water Project
 - Groundwater
 - Brackish water desalters
- Wastewater ~ 263,000 accounts
 - 47 MGD
- Recycled water ~ 686 accounts
 - 33,745 AF sold in last FY

California's Largest Retail Water Agencies



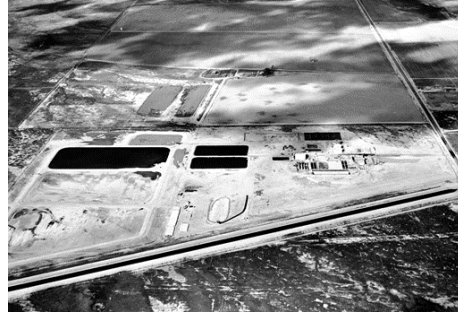
About EMWD

- Five division publicly-elected Board of Directors
- More than 600 employees
- Annual budget of \$465 million for FY 2022-23
- Five-year capital program of \$534.5 million out to FY 2025-26
 - More than 180 active capital projects

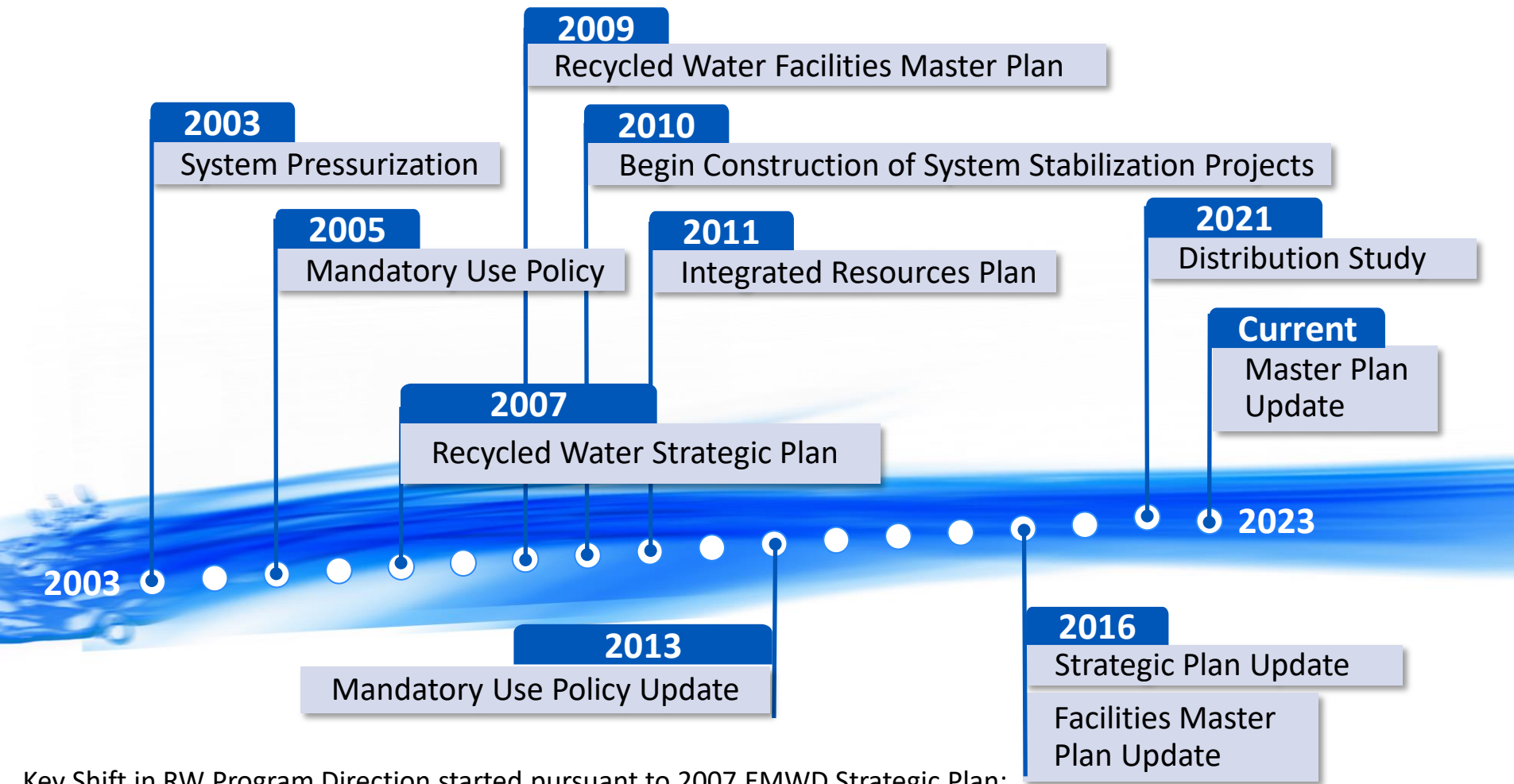


EMWD Recycled Water Program History

- **1960:** Treated effluent disposed through on-site percolation/evaporation ponds
- **1966:** Began marketing recycled water for local farmers
- **1991:** Received USBR funding to develop recycled water backbone transmission system
- **2003:** Initial system pressurization
- **2008:** Received USBR (ARRA) funding to stabilize recycled water system
- **2010:** Began construction of system stabilization projects
- **2020:** Embarked on potable reuse



Recycled Water Program Initiatives



Key Shift in RW Program Direction started pursuant to 2007 EMWD Strategic Plan:

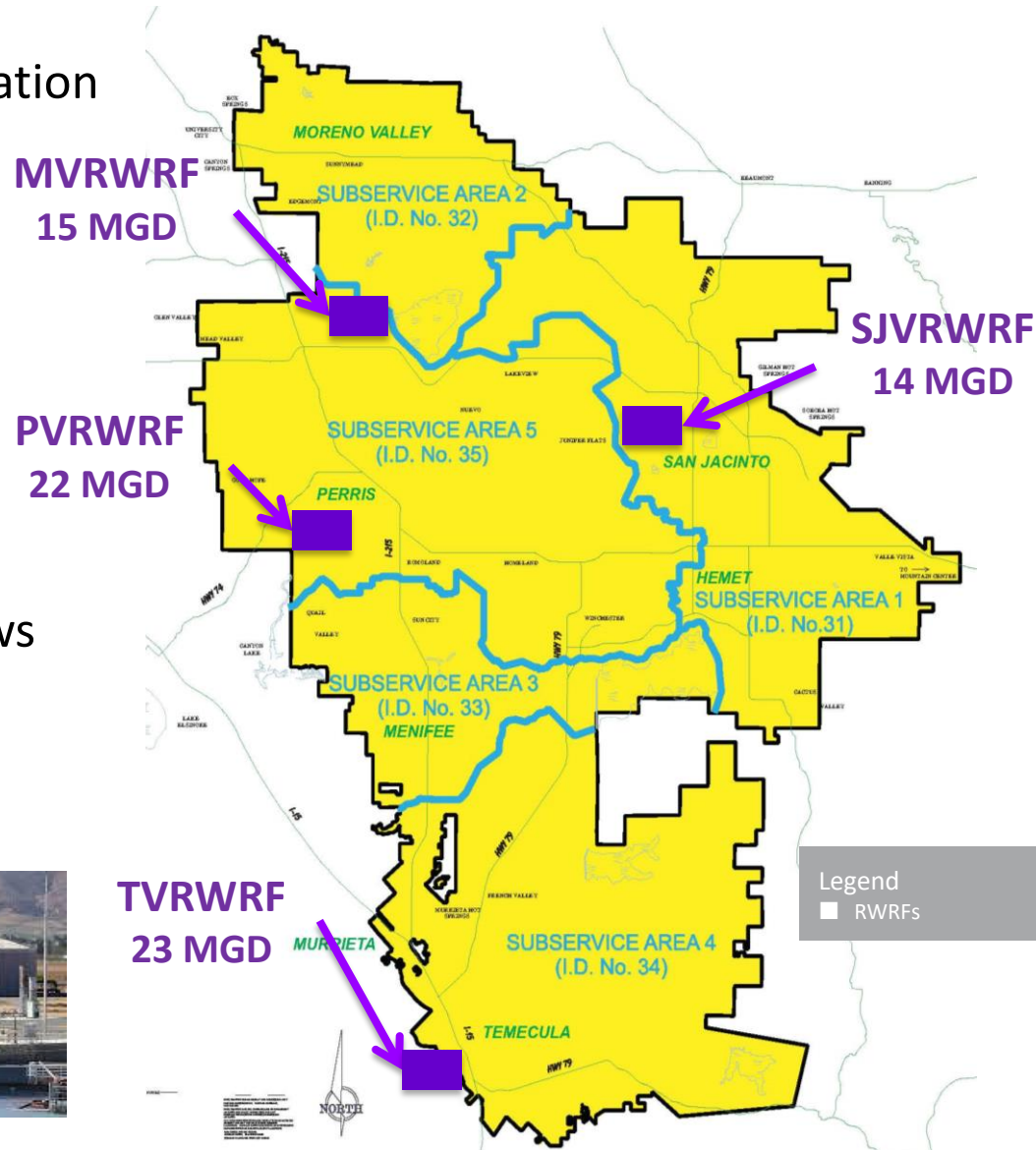
“Recycling” was moved from **Collect and Treat Wastewater** to **Water Supply & Reliability**

Consistent Goal: Maximize Beneficial Reuse

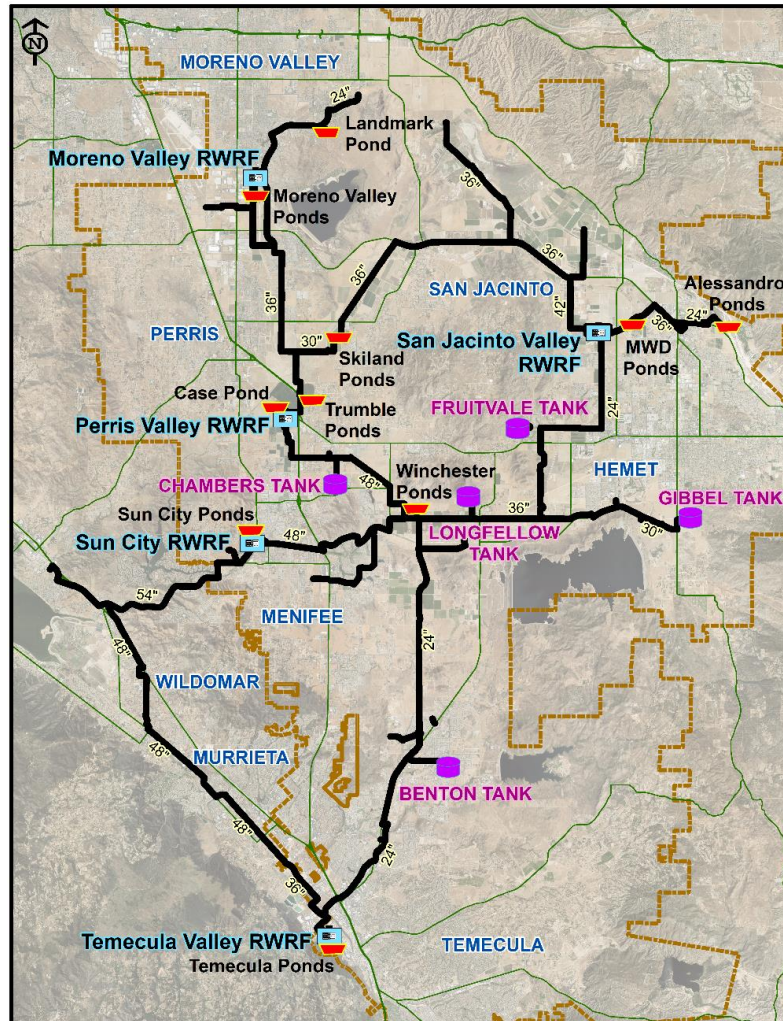
Consistent Approach: Improve system reliability and level of service

Wastewater Collection and Treatment

- Four Regional Water Reclamation Facilities (RWRFs)
 - San Jacinto Valley
 - Moreno Valley
 - Temecula Valley
 - Perris Valley
- 74 MGD current permitted operating capacity
- 47 MGD current average flows



EMWD's Recycled Water Program



- \$200 million in capital investments
- 252 miles of recycled water pipeline
- Nearly 7,700 AF of seasonal storage
- Four pressure zones consisting of:
 - 19.5 MG of elevated storage
 - 24 active pump facilities
- Embarking on \$166 m investment in potable reuse of recycled water
 - Awarded \$27.5 m through USBR



Innovative Programs

Ag In-Lieu Program

- Farmers use recycled water instead of pumping high quality groundwater
- 6,000 acre feet/year

Accelerated Recycled Water Retrofit Program

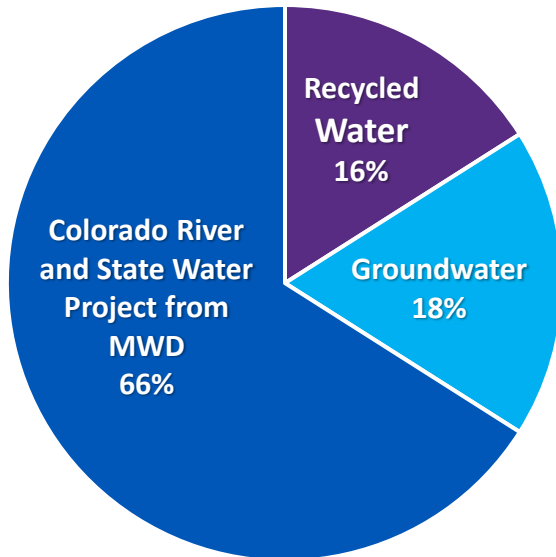
- EMWD funds upfront costs to retrofit landscaping from potable to recycled, remove turf, and install climate appropriate landscaping
- Award winning, nationally recognized
- Retrofit nearly 50 sites to date
- 700,000 square feet of turf has been transitioned to recycled water



Water Supply Portfolio

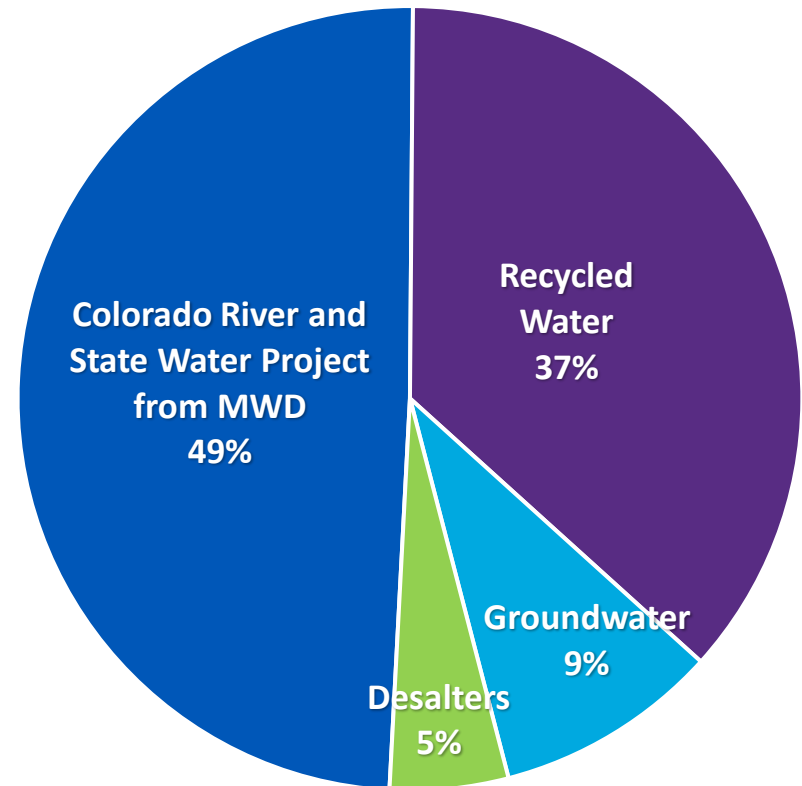
1990

Population served: 358,000



2022*

Population served: 888,268



*Total Water Supply: 149,733 AF per EMWD Annual Comprehensive Financial Report, FYE 2022

Next Steps

Continue to:

- Achieve zero discharge
- Maximize potable water offset
 - Match water source to use
- Minimize costs
- Optimize salt balance

Moving forward:

- Overcome challenges related to reduced indoor water use
- Integrate wastewater and recycled water planning
- Maximize opportunities for regional collaboration
- Advance potable reuse of recycled water





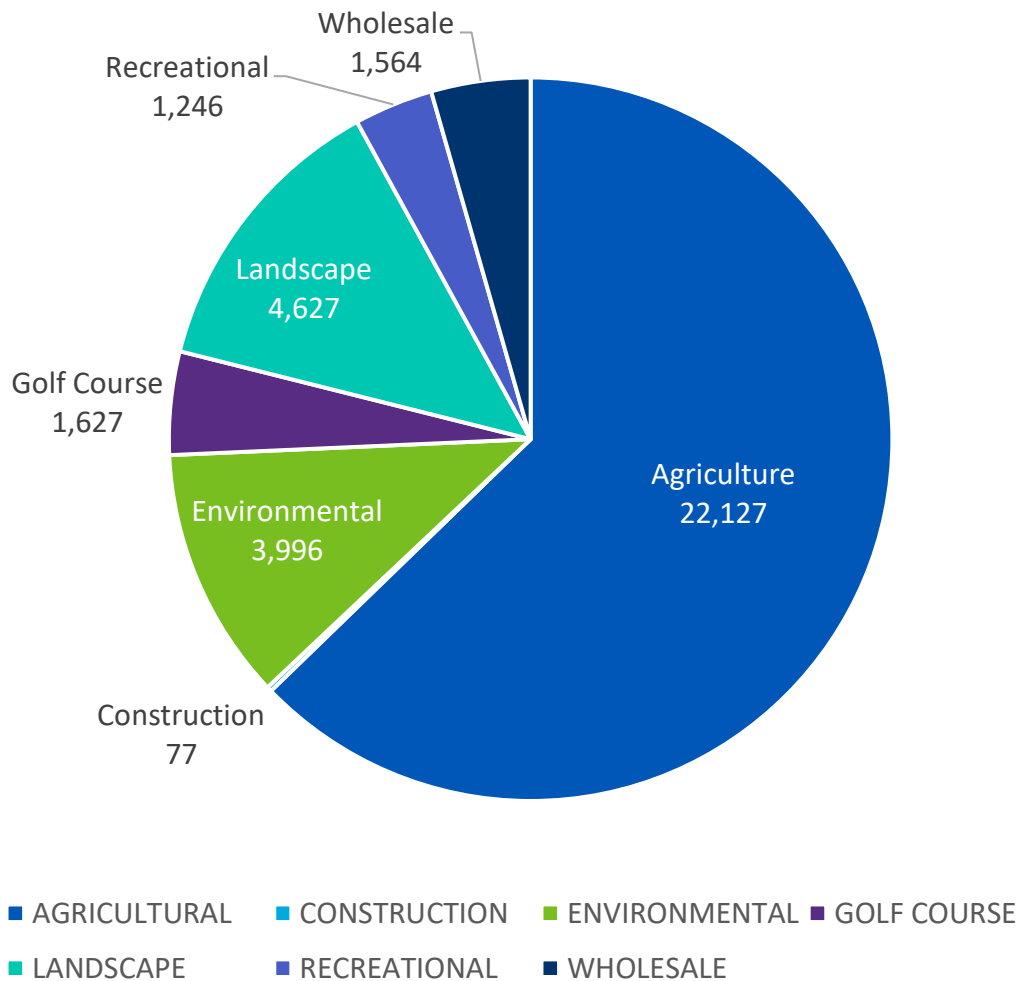
Questions / Discussion

Jolene Walsh

Director, Policy and Governmental Affairs

Email: walshj@emwd.org

Recycled Water Usage Type FY 2020-21



*Per EMWD Customer Billing Data, FYE 2021