

# Colorado River Compact Water Bank Feasibility Study

Southwestern Water Conservation District

Water Seminar  
Durango, CO ♦ April 4, 2014

Daniel R. Birch, P.E.  
Deputy General Manager



**Colorado River District**

Protecting Western Colorado Water Since 1937

Gulf of Mexico

(Havana) La Habana

© 2007

# Post Compact Uses

Total Post-Compact M&I Depletions	Current Average Annual Water Use (AFY)
Residential Indoor	109,320
Residential Outdoor	99,050
Commercial/Industrial	109,380
Self Supplied Industrial	32,940
Total	350,690

# Post-Compact Uses (cont.)

West Slope Post-Compact M&I Depletions	Current Average Annual Water Use (AFY)
Residential Indoor	1,390
Residential Outdoor	16,675
Commercial/Industrial	4,210
Self Supplied Industrial	32,940
<b>Subtotal</b>	<b>55,215</b>
East Slope Post-Compact M&I Depletions	
Residential Indoor	107,930
Residential Outdoor	82,375
Commercial/Industrial	105,170
Self Supplied Industrial	
<b>Subtotal</b>	<b>295,475</b>

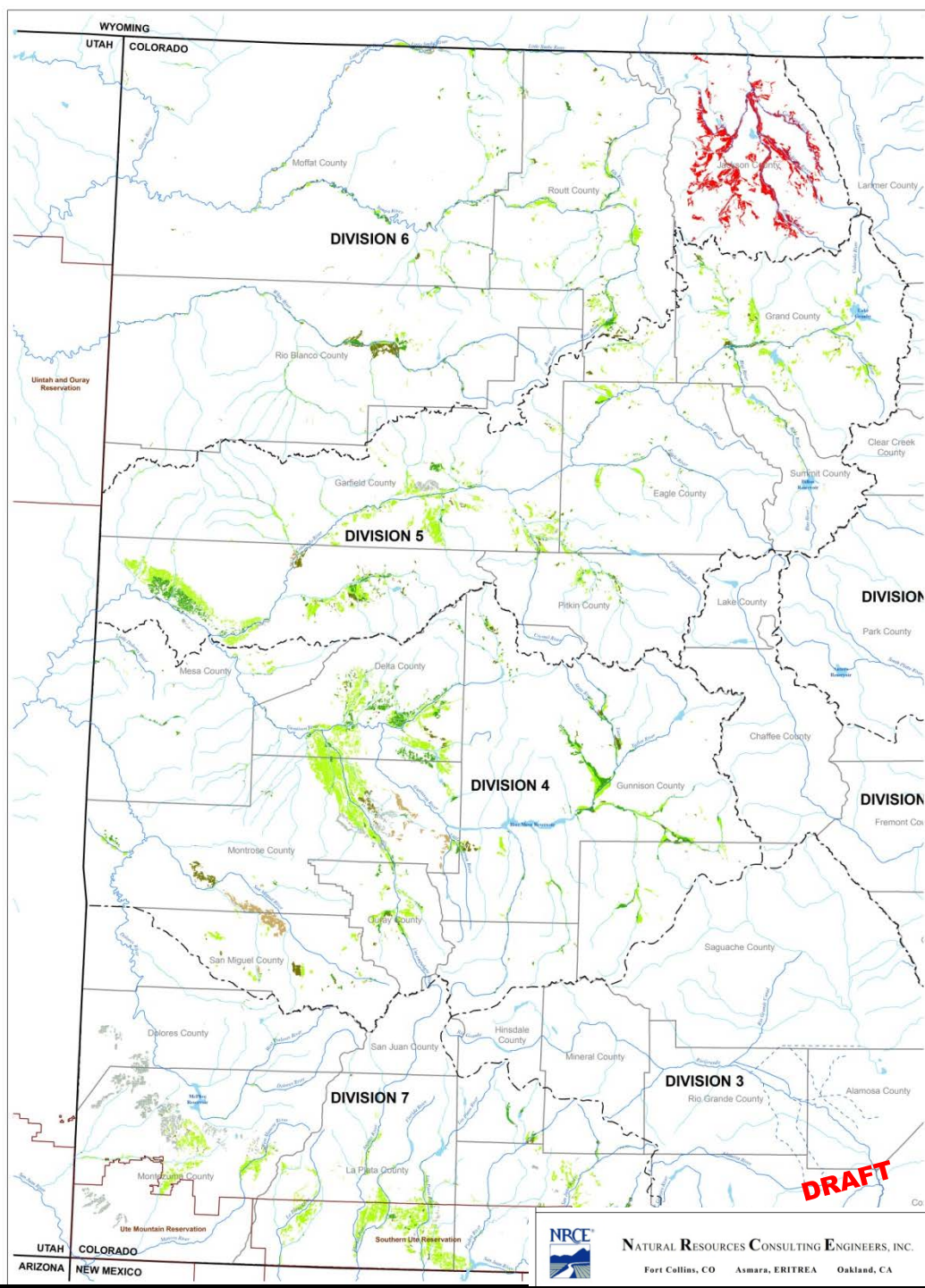
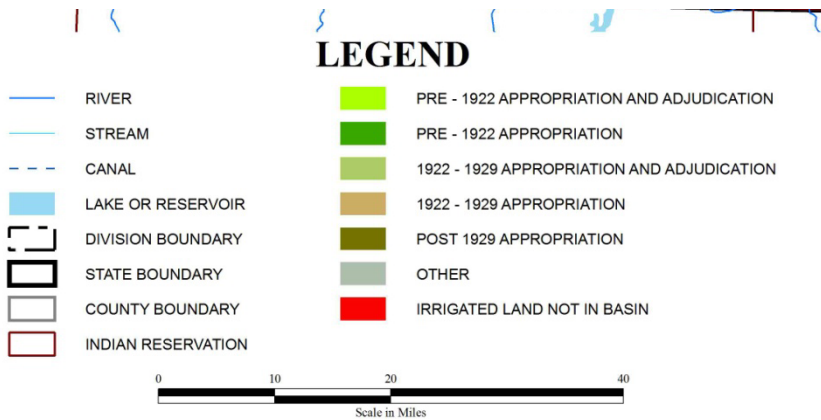
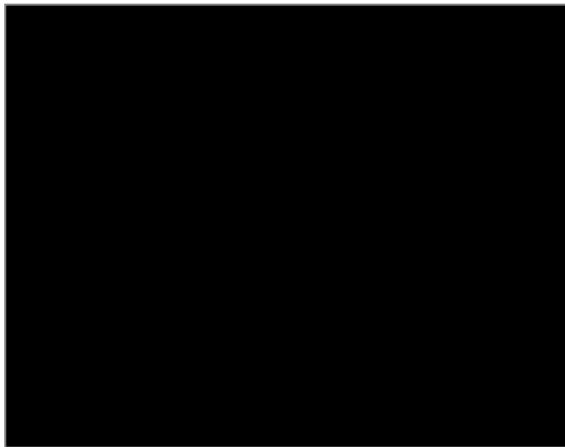


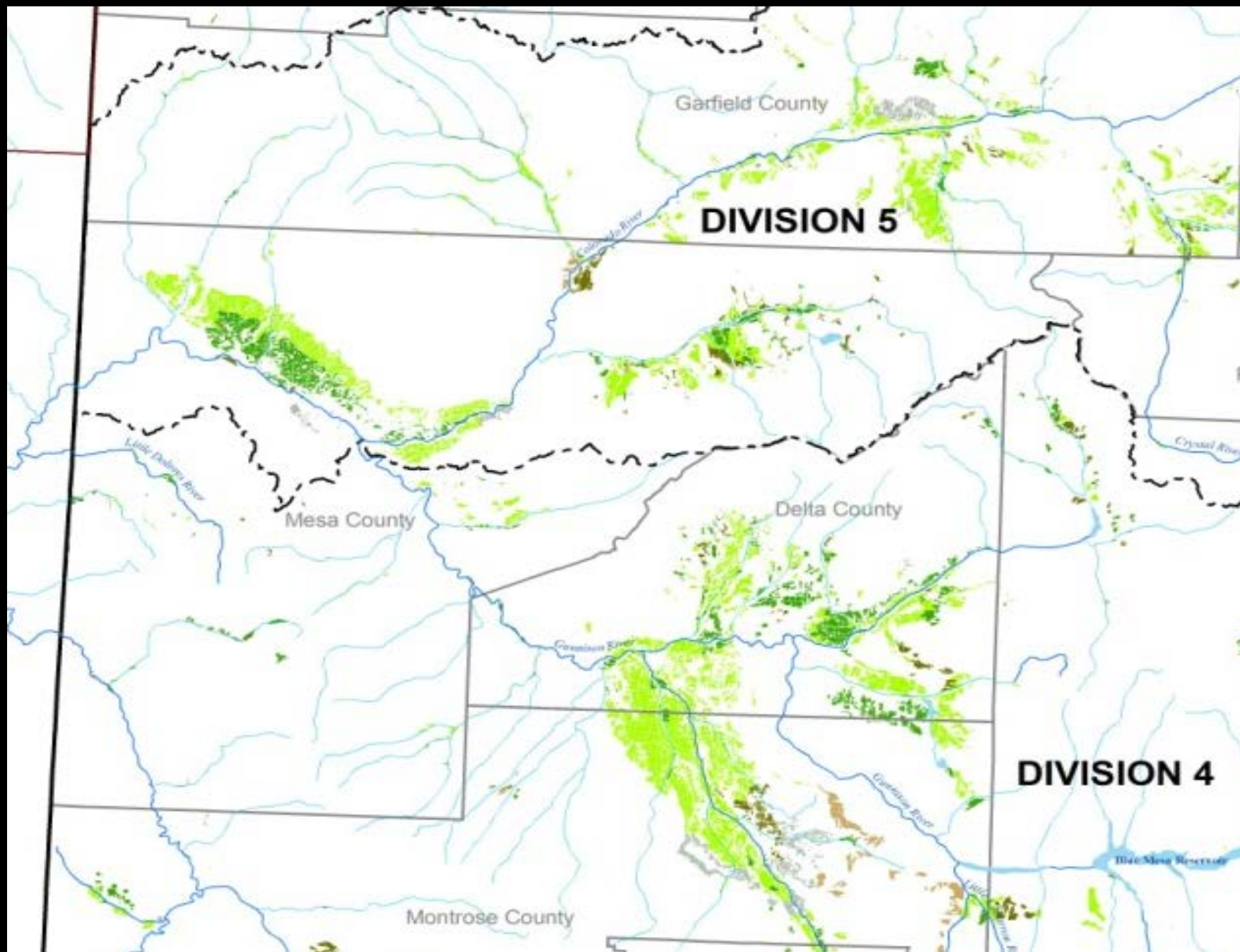
# Preliminary Results

PLATE 2

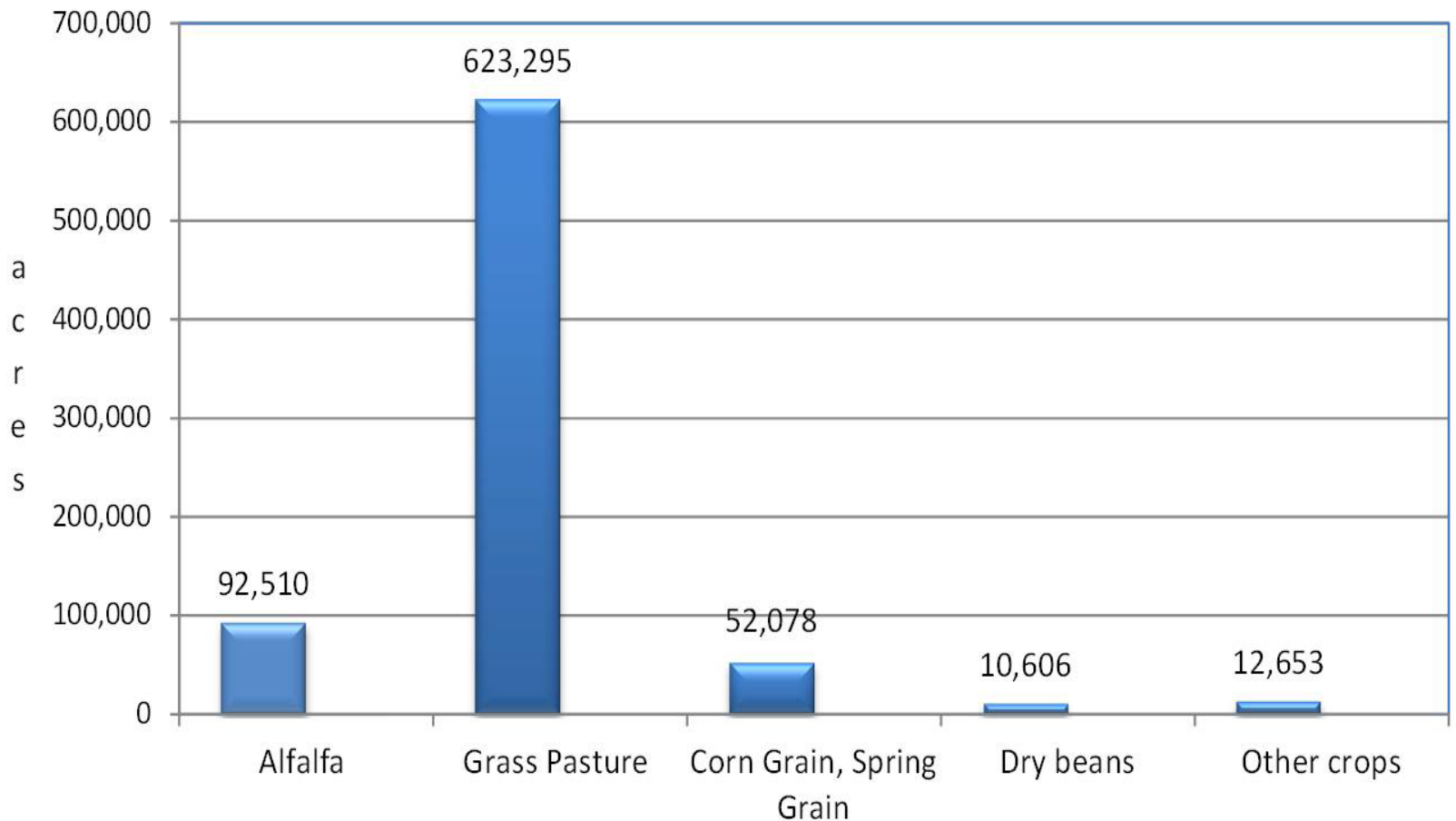
NOVEMBER 2011

## COLORADO WATER BANK ADJUDICATION DATE MAP





# Irrigated Acres By Crop Type In Water Divisions 4-7



# Pre-Compact Irrigation Use

Total for Basin				
Water Rights Category → Appropriation/Adjudication	Not Known	Pre-Compact	Post Compact Water Rights	Total
Crop Type ↓	Consumptive Irrigation Use (acre-feet/year)			
Alfalfa	43,219	110,164	25,368	178,750
Corn Grain	1,492	34,504	3,476	39,473
Dry Beans	4,618	6,905	1,37	11,660
Grass pasture	80,233	794,074	195,451	1,069,759
Orchard with Cover	565	1,496	345	2,406
Orchard without Cover	3,160	5,574	582	9,317
Spring Grains	2,809	27,830	3,192	33,830
Vegetables	895	549	28	1,472
Others	1,616	5320	2,161	9,097
Totals	138,607	986,416	230,740	1,355,763
Percent of Totals	10.2%	72.7%	17.0%	100%



