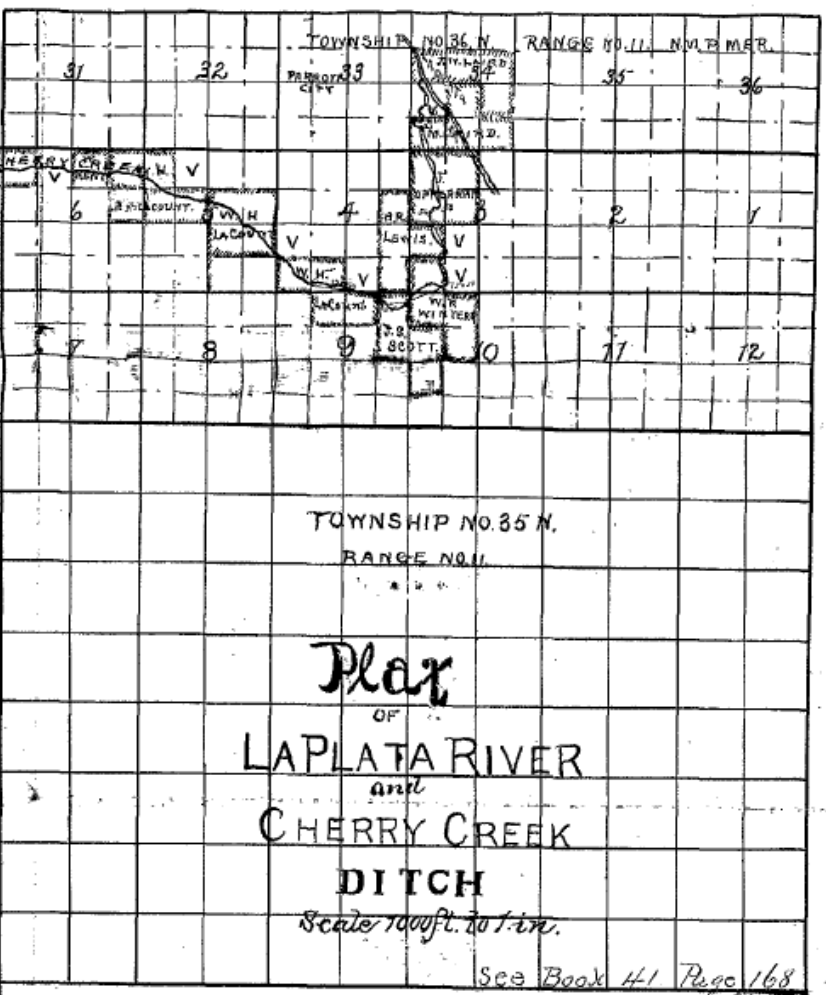
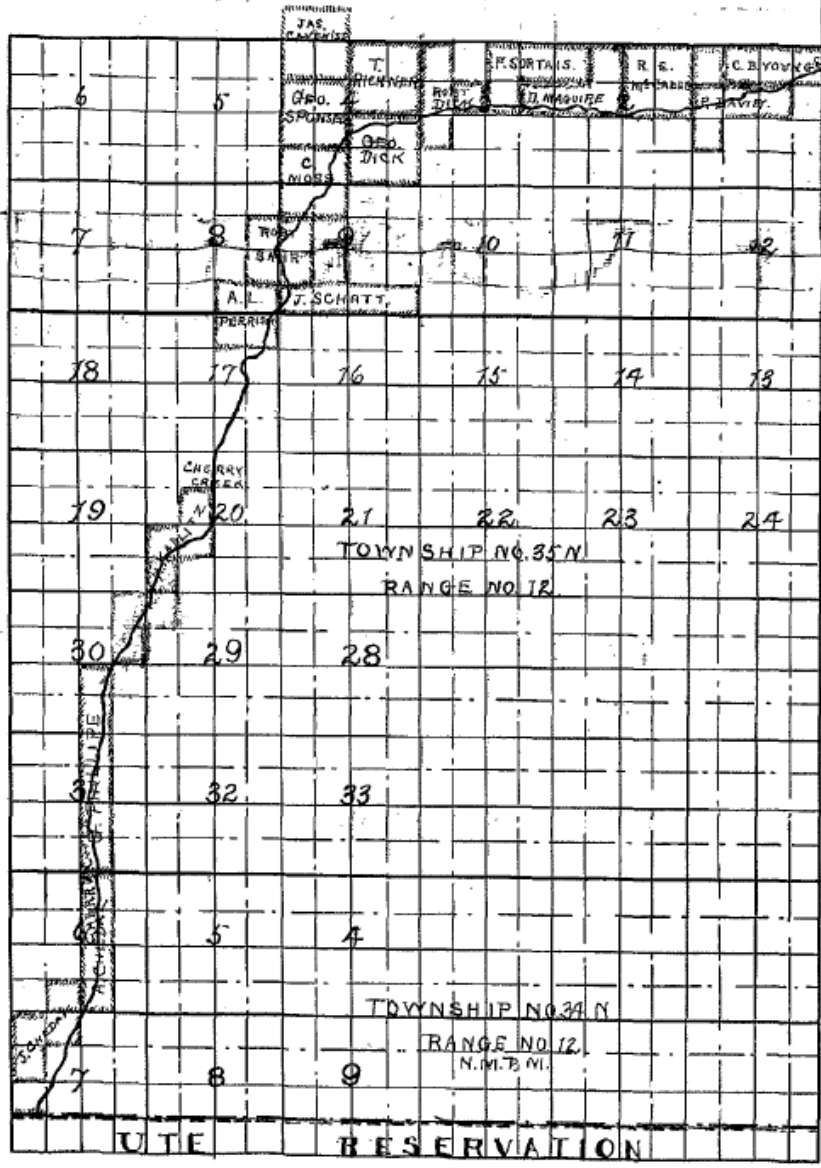


La Plata River  
and Cherry Creek  
Ditch Company

- Surveyed by R. L. Gifford in 1890
- Survey work started June 2<sup>nd</sup>, 1890
- Contractors were E. Woodsworth and A. C. Wheeler
- Construction started September 11<sup>th</sup>, 1890
- Ditch served approximately 2,500 acres according to testimony in 1895
- $\frac{3}{4}$  mile long flume installed in 1893
- According to George Sponsel testimony, cost of ditch was \$6,000 with additional cost of flume being \$4,871.53
  - Today's dollar equivalent is \$260,379.73



Plan  
OF  
LAPLATA RIVER  
and  
CHERRY CREEK  
DITCH  
Scale 100ft. to 1 in.

See Book 41 Page 168

Owning land to be irrigated: -

24

25

26

27

28

29

30

31

32

George Sprouel 320 acres

John Singer 320 acres

Joe Schatz 320 "

Philip Albert Jr 160 "

Philip Albert Sr 320 "

R. E. McCaleb 160 "

John Sprouel 400 "

John Hildebrand 160 "

James Carness 320 "

August Albert 160 "

H. R. Sahr 200 "

Fred Meyer 320 "

8

Ditch was commenced June 2, 1890.

9

Ditch appropriates waters of both La Plata River and  
Cherry Creek.

10

11

Depth of ditch 2 feet

12

Width " 8 "

13

Grade 10.56 per mile

14

Carrying Capacity 60 cubic feet per second.

15

# Approach Before





2011/11/18



2011/11/21





2011/11/22



2011/11/29



2011/11/25



2011/11/25



2011/11/28



2011/11/29



2011/11/30













The La Plata River and  
Cherry Creek Ditch Shareholders  
would like to thank the following  
entities for their help.

**Southwestern Water Conservation District**  
**Natural Resources Conservation Service**  
**Colorado Water Conservation Board**