

The background of the slide is a light gray gradient with several realistic water droplets of various sizes scattered across it. The droplets have highlights and shadows, giving them a three-dimensional appearance. The main title is centered in a large, bold, dark red font.

UPDATE ON SUPERFUND AND WATER QUALITY IN THE ANIMAS RIVER BASIN

PETER BUTLER, PH.D.

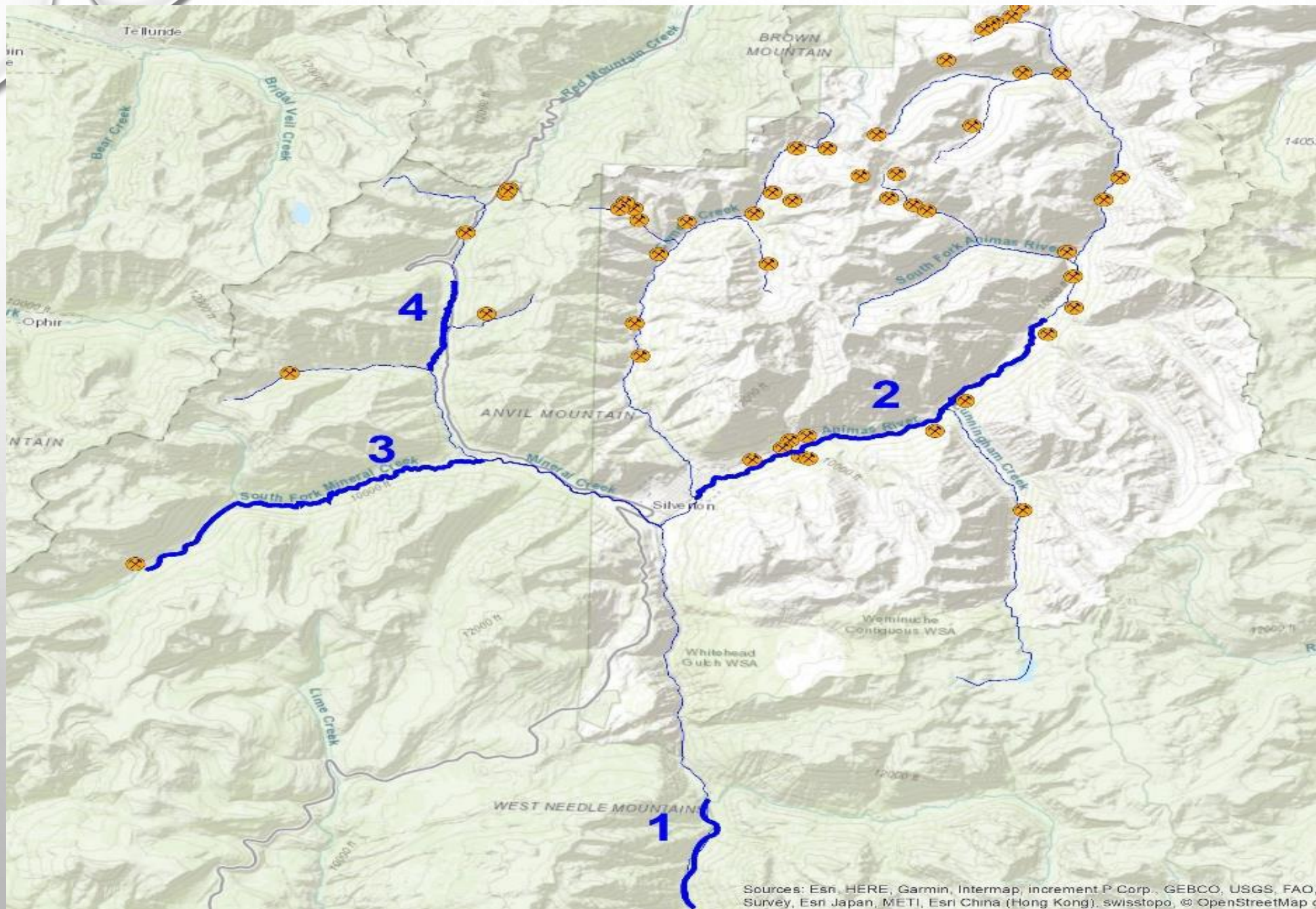
CHAIR, BONITA PEAK COMMUNITY ADVISORY GROUP

4/1/22

BONITA PEAK MINING DISTRICT (BPMD) SUPERFUND SITE – BIG PICTURE

- DESIGNATED IN 2016. CONSISTS OF 46 MINE SITES AND TWO STUDY AREAS. NO SET BOUNDARIES.
- THREE SITE GOALS: IMPROVE WATER QUALITY, STABILIZE SOURCE AREAS, MINIMIZE UNPLANNED RELEASES.
- EXPENDITURES SO FAR:
 - ~\$30 MILLION BY EPA IN 2015 IN RESPONSE TO THE GOLD KING SPILL,
 - ~\$70 MILLION BY EPA SINCE SITE DESIGNATION IN 2016,
 - ~\$14 MILLION BY SUNNYSIDE GOLD CORP,
 - SMALLER AMOUNTS BY BLM, FS, CDPHE, AND OTHER PRIVATE PROPERTY OWNERS.





ACTIVITY SINCE SITE DESIGNATION IN 2016

- TREATMENT OF THE GOLD KING MINE DISCHARGE
- DESIGNING A PERMANENT REPOSITORY (START 2023)
- LOTS OF DATA COLLECTION (MANY TYPES OF DATA)
- INVESTIGATIVE WELL DRILLING
- SOME SOURCE STABILIZATION
- NO SIGNIFICANT WATER QUALITY IMPROVEMENTS OTHER THAN TREATMENT OF THE GOLD KING



Gold King Treatment Plant

SUPERFUND PROCESS

DESIGNED TO SUPPORT LITIGATION FOR COST-RECOVERY

Koehler Bulkhead



- EPA CAN CLEAN UP SITES AND THEN PURSUE POTENTIAL RESPONSIBLE PARTIES (PRP'S) TO RECOVER COSTS.
- PRP'S INCLUDE CURRENT OR PAST OWNERS OR OPERATORS OF SITES.
- DEEP-POCKETED PRP'S CAN BE HELD RESPONSIBLE FOR ALL COSTS OF SITE EVEN IF THEY CONTRIBUTED TO ONLY A SMALL PORTION OF THE DAMAGES.
- PRP'S CAN SUE OTHER PRP'S TO RECOVER COSTS.
- EPA DOESN'T USE PREVIOUSLY COLLECTED DATA.

UNITED STATES VS. SUNNYSIDE GOLD CORP. (SGC) DRAFT SETTLEMENT

Confluence of Cement Cr. and Animas R.



- PAYMENT OF \$90 MILLION DIVIDED EQUALLY BETWEEN U.S. GOV'T AND SGC INDICATING EQUAL POTENTIAL LIABILITY.
- BLM, FS, AND EPA ARE ALL PRP'S.
- IN EXCHANGE, U.S. WILL NOT SUE SGC AND VICE VERSA. FEDERAL AGENCIES WILL NOT SUE EACH OTHER. SGC WILL NOT SUE OTHER PRP'S.
- HOPEFULLY, THIS WILL SETTLE MOST POTENTIAL LITIGATION AND ALLOW PARTIES (GOV'T AGENCIES) TO SHARE INFORMATION.

BONITA PEAK COMMUNITY ADVISORY GROUP (CAG)

- AN OFFICIALLY RECOGNIZED GROUP OF DIVERSE, LOCAL STAKEHOLDERS ACTING AS LIAISONS BETWEEN EPA AND THE LOCAL COMMUNITY.
- OUT OF 15 MEMBERS, FOUR ARE APPOINTED BY LOCAL GOVERNMENTS AND THE REST ARE AT-LARGE AND LIVE IN THE ANIMAS RIVER WATERSHED.



Animas Confluence with Cascade in April

CAG ACTIVITIES

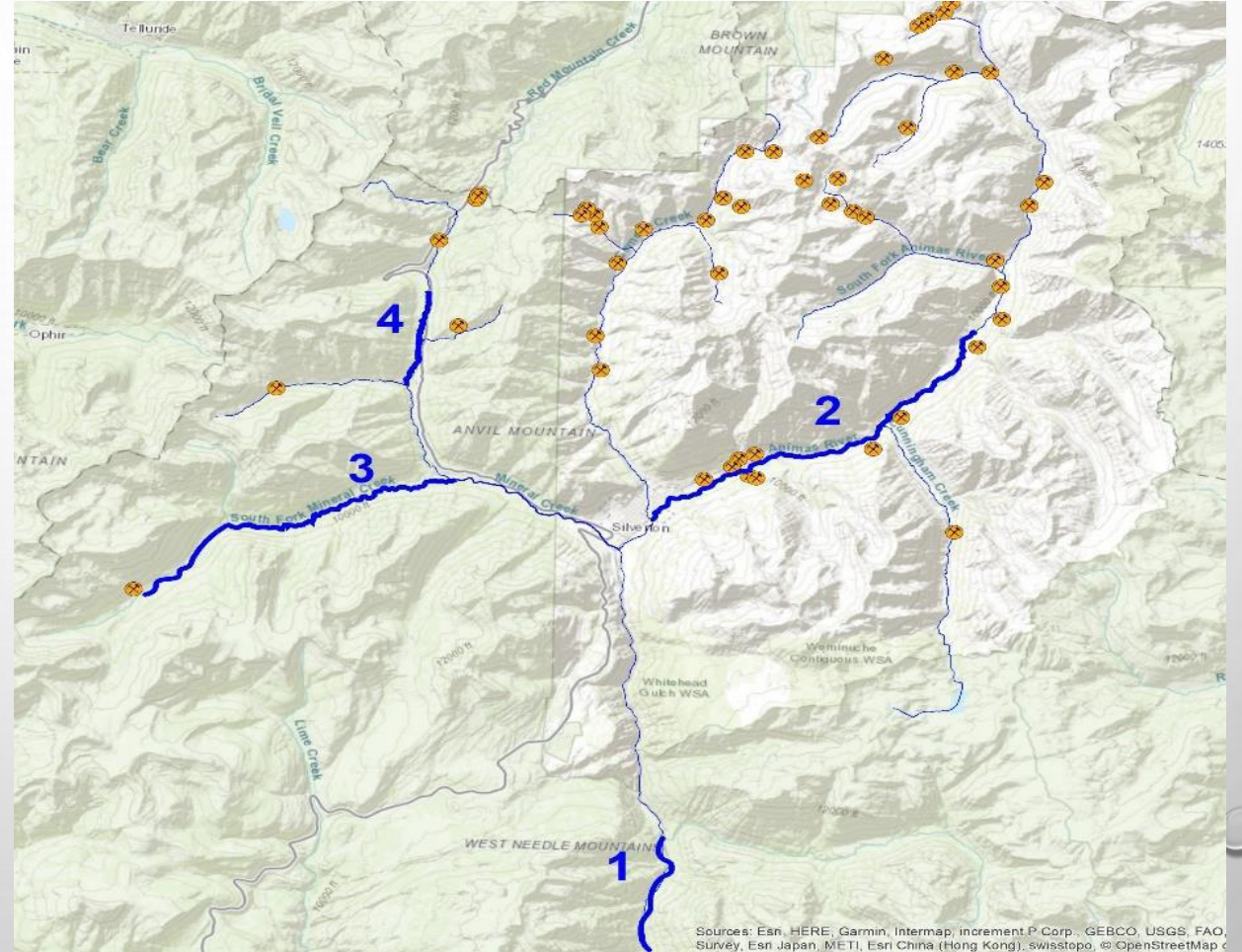
- MONTHLY MEETINGS.
- MAINTAIN A WEBSITE (BONITA PEAK CAG).
- SAMPLE MONTHLY BETWEEN SILVERTON AND BAKERS BRIDGE.
- PROPOSE WATER QUALITY STANDARDS.



Skiing Down the Tracks from Silverton to Sample

CAG WATER QUALITY PROPOSAL

- OVER A DOZEN MINE REMEDIATION PROJECTS NEAR RED MTN. PASS WERE COMPLETED PRE-SUPERFUND.
- PROJECTS WERE COMPLETED BY THE ANIMAS RIVER STAKEHOLDERS GROUP, MINING COMPANIES, AND FS.
- ZINC AND CADMIUM CONCENTRATIONS DROPPED BY 72%; COPPER CONCENTRATIONS BY 95%.
- BROOK TROUT MOVED INTO THE SEGMENT.
- ADD AQUATIC-LIFE USE CLASSIFICATION AND ACCOMPANYING STANDARDS.



QUESTIONS?

